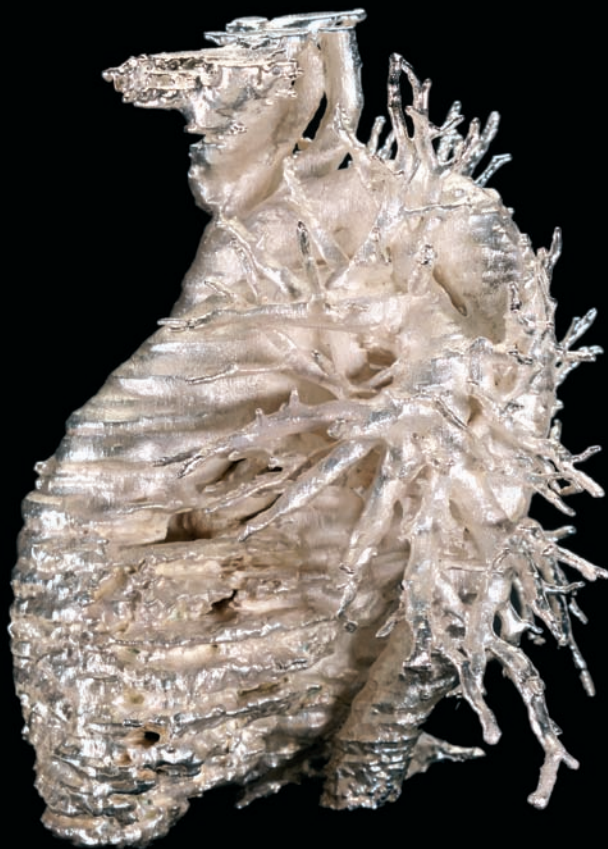


news from nowhere, Traverse Theatre Company and The Fruitmarket Gallery present a new play by **TIM CROUCH**

ENGLAND



VENUE 359

The Fruitmarket Gallery

45 MARKET STREET, EDINBURGH, EH1 1DF

news from
nowhere
www.newsfromnowhere.net

The
Fruitmarket
Gallery



SCOTLAND'S NEW WRITING THEATRE

**3-26
August
2007**

SEE OVER
FOR
PERFORMANCE TIMES

TICKETS

£16 (£11/unemployed £5)

FROM

Traverse Theatre box office

0131 228 1404

www.traverse.co.uk

ENGLAND

"When I'm with my boyfriend I think that anything is possible. I wish that I wasn't so ill so that we could have sex. We used to have really good sex. He knows so much about art, which is why he would love it here at The Fruitmarket Gallery. I don't know anything, really. I look at these things and I don't really understand them. I like them, but my boyfriend would understand them. He says that good art is art that sells."



Two guides in a gallery. Two lovers with a lifestyle to maintain.
Two hearts beating eight thousand miles apart.
Translations. Transactions. A transplantation.

ENGLAND is the story of a search for a new heart. It's a story about a life saved and an illness overcome at any cost. It's a tour through spaces and across borders: from an art gallery to a jam factory, from Edinburgh to Osaka, from a hospital bed to a hotel room.

It's a tour to the end of the world.

ENGLAND is Tim Crouch's third play for adult audiences. **My Arm** (*Prix Italia*, 2005) and **An Oak Tree** (*Herald Angel*, 2005, *Obie* 2007) both premiered at the Traverse Theatre. For **ENGLAND**, Tim collaborates with **An Oak Tree** co-directors Karl James and a smith and performs with a founder member of the **Shunt Collective**, Hannah Ringham. Sound design is by Dan Jones.



PLEASE NOTE

ENGLAND is performed at **The Fruitmarket Gallery**, Market Street, Edinburgh, within an exhibition of work by **Alex Hartley**. Tickets are available from the **Traverse Box Office** (Cambridge Street or Drill Hall) until 6pm on the day of the performance and then from 30 minutes prior to the performance at the venue (subject to availability).

The audience will be standing for some of the performance.

ENGLAND is a **Traverse Theatre Company** commission, co-produced by **news from nowhere**, **Culturgest** (Portugal) and **Warwick Arts Centre**. It is supported by the **Peggy Ramsay Foundation** and was partially developed at the **National Theatre Studio**.

DATES & TIMES

Fri 3 Aug (Preview) **8pm**
Sat 4 & Sun 5 Aug **8pm**
Tue 7–Thu 9 Aug **8pm**
Fri 10 & Sat 11 Aug **8pm & 10pm**
Sun 12 Aug **8pm**
Tue 14–Thu 16 Aug **8pm**
Fri 17 & Sat 18 Aug **8pm & 10pm**
Sun 19 Aug **8pm**
Tue 21–Sun 26 Aug **8pm & 10pm**

TICKETS

£16 (£11/unemployed £5)
from
Traverse Theatre box office
0131 228 1404
www.traverse.co.uk



IMAGE:
JANE PROPHET *THE HEART*

SILVER ON COPPER PLATED
RAPID PROTOTYPE OF
HEALTHY HUMAN HEART.
PHOTO BY STEVE PAYNE

GRAPHIC DESIGN BY [JULIA@WE3.CO.UK](mailto:julia@we3.co.uk)

"Nobody does it quite like Tim Crouch. He's an experimental theatre-maker unto himself: exceptionally intelligent, quiet and deadpan, barely acting, weirdly gripping."

INDEPENDENT ON SUNDAY



BRITISH
COUNCIL

Edinburgh
Showcase 2007
10th Anniversary



ARTS COUNCIL
ENGLAND